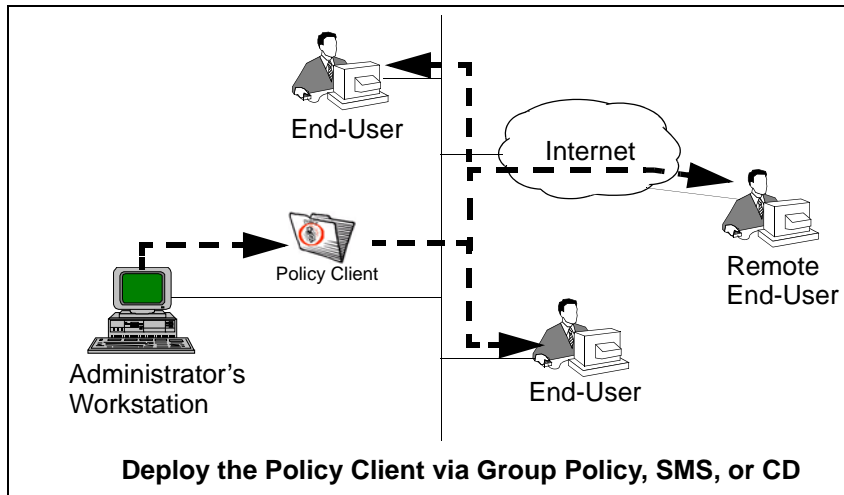


Step 7: Deploy Policy Clients to end-users



Requirements

You can deploy a Policy Client to one user or to many users. When deploying a Policy Client you must distribute all files related to that Policy Client. A Policy Client consists of:

- All folders and files contained within the program files sub-folder
- All related .cab files
- An .msi file

See Appendix A of the *SafeNet Axis Administration Guide* for details.

SafeNet Corporate Headquarters

4690 Millennium Drive
Belcamp, Maryland 21017 USA

Product names used within are trademarks of their respective owners.
© 2004 SafeNet, Inc. All rights reserved.

223-0092-002, December 2004



SafeNet Axis 5.3

Administrator's

Quick Start Guide

Notice: Datakey Axis is now SafeNet Axis

In Q4 2004 Datakey Inc. was acquired by SafeNet Inc. In connection with this acquisition the name Datakey Axis is being changed to SafeNet Axis. All text references in this guide have been changed to SafeNet Axis but many screen images still contain the Datakey Axis name. Screen images will be updated in a future release of SafeNet Axis.

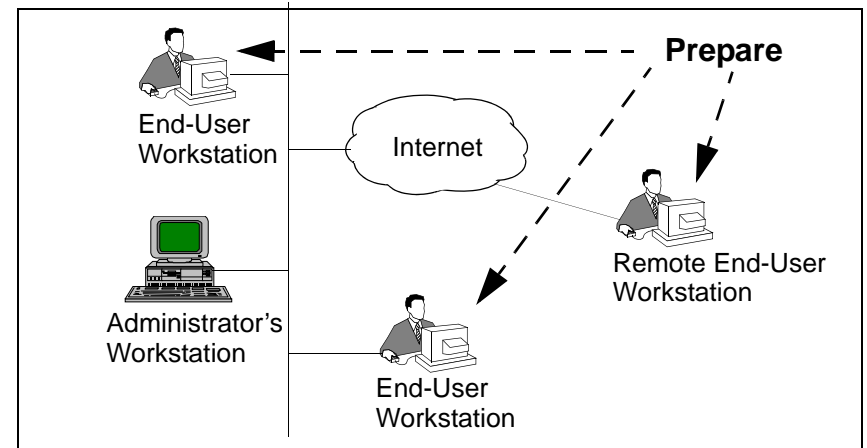
Welcome

Welcome to SafeNet Axis. SafeNet Axis is a complete software and smart card solution that delivers simplified strong authentication and secure Single Sign-On (SSO) capabilities for a full range of enterprise applications and network resources. Its innovative client-based architecture and patent-pending Rapid Deploy™ technology make SafeNet Axis easy to implement. And it relieves you (the administrator) of the nightmares that typically come with setting up and managing today's password authentication systems

This quick start guide highlights the major steps involved in implementing SafeNet Axis. The major steps are:

- Step 1: Install SafeNet Axis Management Center (AMC) software on an administrative workstation
- Step 2: Configure your Microsoft network components (optional)
- Step 3: Configure smart card parameters
- Step 4: Select groups and train Axis for SSO
- Step 5: Build one or more SafeNet Axis Policy Clients
- Step 6: Prepare end-user workstations
- Step 7: Deploy SafeNet Axis Policy Clients to your end-users

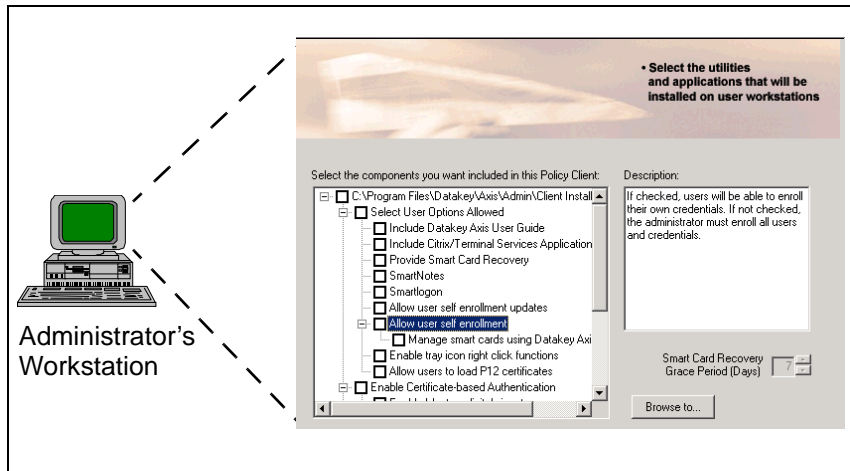
Step 6: Prepare end-user workstations



- End-user hardware requirements:**
 - A Pentium or later processor
 - A minimum of 16 MB of RAM (32 MB recommended)
 - One of the following: An available serial port, PCMCIA slot, or USB port if you are using a smart card reader, or an available USB port if you are using a USB smart card or token
 - (Optional) A network connection for automated deployment
- End-user software requirements:**
 - One of the following: Windows XP Professional, Windows 2000 Professional, Windows NT 4.0 Desktop (SP 6a or higher), or Windows 98 SE (requires Active Directory Services Interface (ADSI)).
 - Microsoft Internet Explorer V5.0 or higher
- Configure smart card behavior within a Windows environment**
See *SafeNet Axis Solutions Guide: For Microsoft Users* for details.
- Distribute smart cards/readers or USB tokens to your end-users**
If desired, customize the *End User Quick Start Guide* provided with your Axis user documentation and distribute it to your end-users.

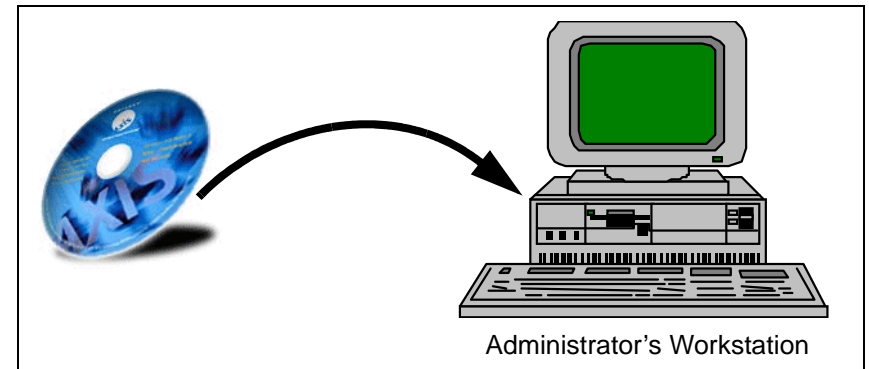
Step 5: Build one or more Policy Clients

Use the Client Builder component of AMC to create one or more pre-configured SafeNet Axis client software builds, or Policy Clients. You uniquely configure each Policy Client to specify which applications and utilities will be available to the users of that particular Policy Client.



See Chapter 7 of the *SafeNet Axis Administration Guide* for details.

Step 1: Install SafeNet Axis Management Center (AMC) software



□ Administrator hardware requirements:

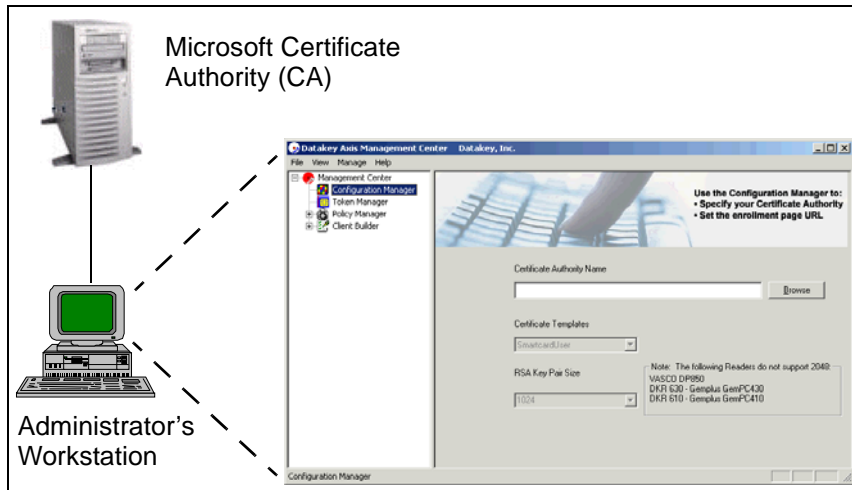
- A Pentium or later processor
- A minimum of 16 MB of RAM (32 MB recommended)
- One of the following: An available serial port, PCMCIA slot, or USB port if you are using a smart card reader, or an available USB port if you are using a USB smart card or token

□ Administrator software requirements:

- Windows 2000 Server, Windows 2000 Professional, Windows 2003 Server, or Windows XP Professional
 - Active Directory (if deploying a Policy Client via Group Policy or SMS)
 - A network connection to your end-users (if deploying a Policy Client via Group Policy or SMS)
 - RRAS (for remote access)
 - Microsoft CA (for use with PKI)
- See Chapter 2 of the *SafeNet Axis Administration Guide* for installation details.

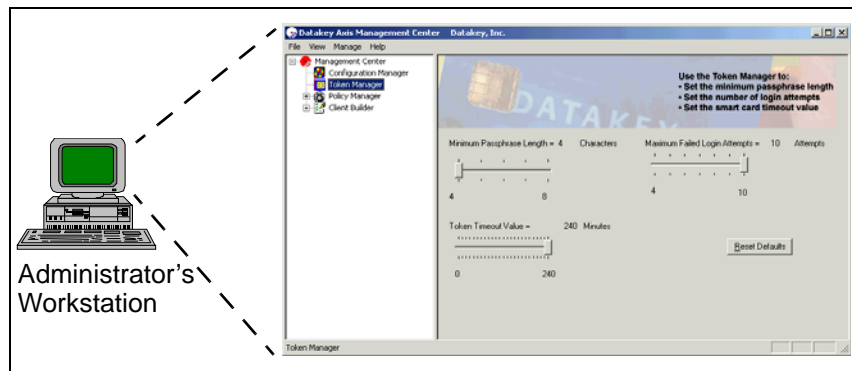
Step 2: Configure Microsoft components

(Optional) If you use PKI, make sure your Certificate Authority (CA) is properly configured and that your workstation is authenticated to the domain in which the CA is located. Use the Configuration Manager component of AMC to specify the CA. See Chapter 4 for details.



Step 3: Configure smart card parameters

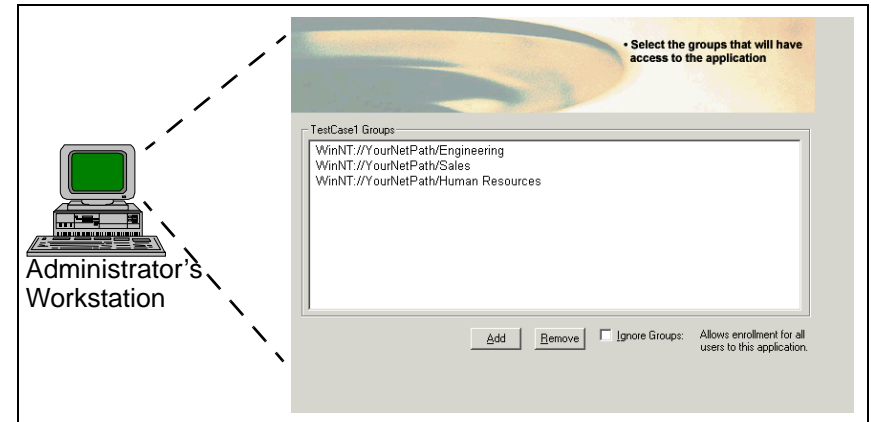
Use the Token Manager component of AMC to define the security features & password policies to be applied to your end-users' smart cards.



Step 4: Select groups and train SSO

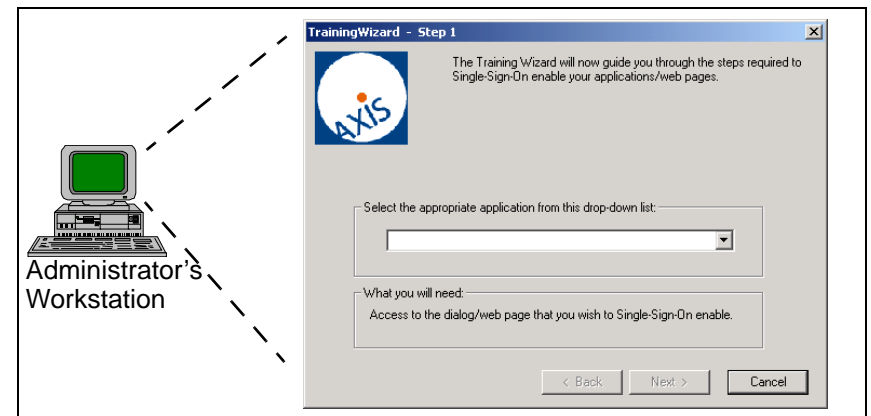
Use the Policy Manager component of AMC to select your groups and to train the SSO feature of SafeNet Axis.

Selecting Groups



Training SafeNet Axis for SSO

Use the Training Wizard to train the SSO feature of SafeNet Axis to log on to your corporate applications on behalf of your users.



See Chapter 6 of the *SafeNet Axis Administration Guide* for details.